

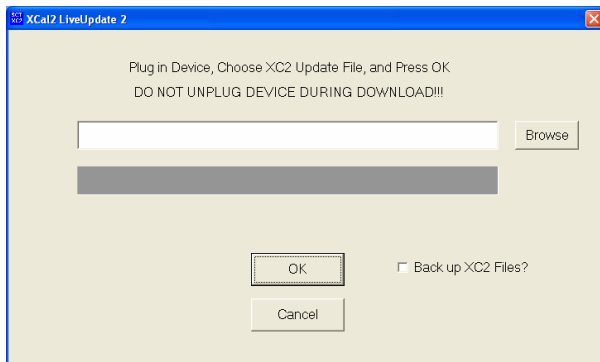
Updating Firmware on your Xcalibrator 2 Flash tool:

Required: XC2LiveUpdate2, the latest *.LU2 firmware file
USB cable and wall power source.

Note: You must flash your vehicle back to stock before updating the firmware.

Download the XC2LiveUpdate2.exe program from www.sctflash.com/downloads.php as well as the latest firmware version.

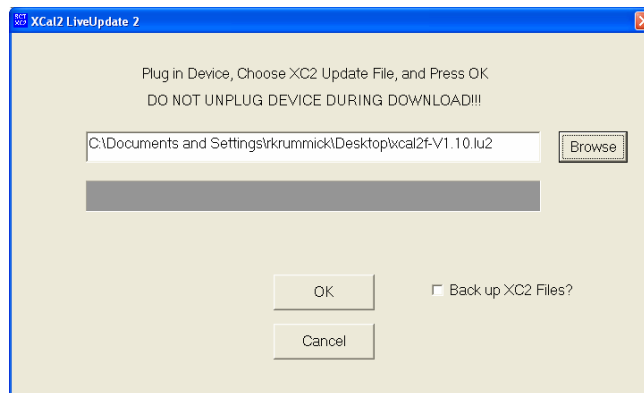
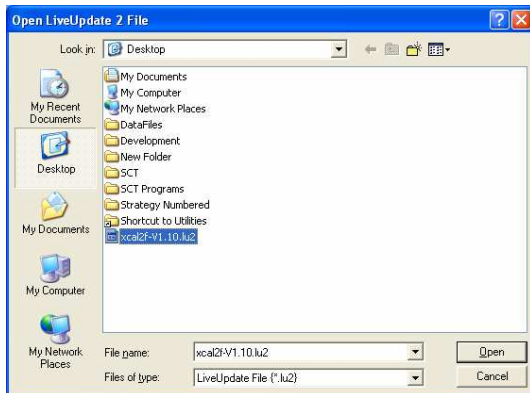
Then launch the XC2LiveUpdate2.exe program.



WARNING FOR FIRMWARE UPDATE

DISABLE ALL SCREENSAVERS, AND OTHER RUNNING PROGRAMS AND PLUG LAPTOP COMPUTERS INTO WALL POWER, AS A POWER INTERUPTION DURING FIRMWARE UPDATE WILL CAUSE THE XCALIBRATOR TO FAIL AND NEED TO BE RETURNED TO SCT FOR RECOVERY

Click on the Browse button, and choose the Firmware file you want to load.



Press the OK button to start your update.

After the update is finished, and your custom tunes were written back to your device, you will then be able to setup your on device data logging.