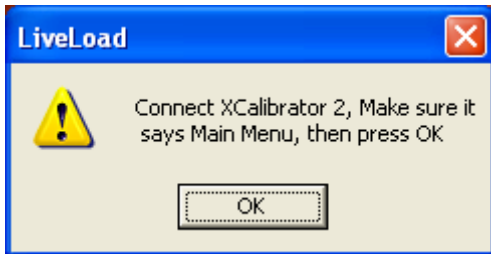
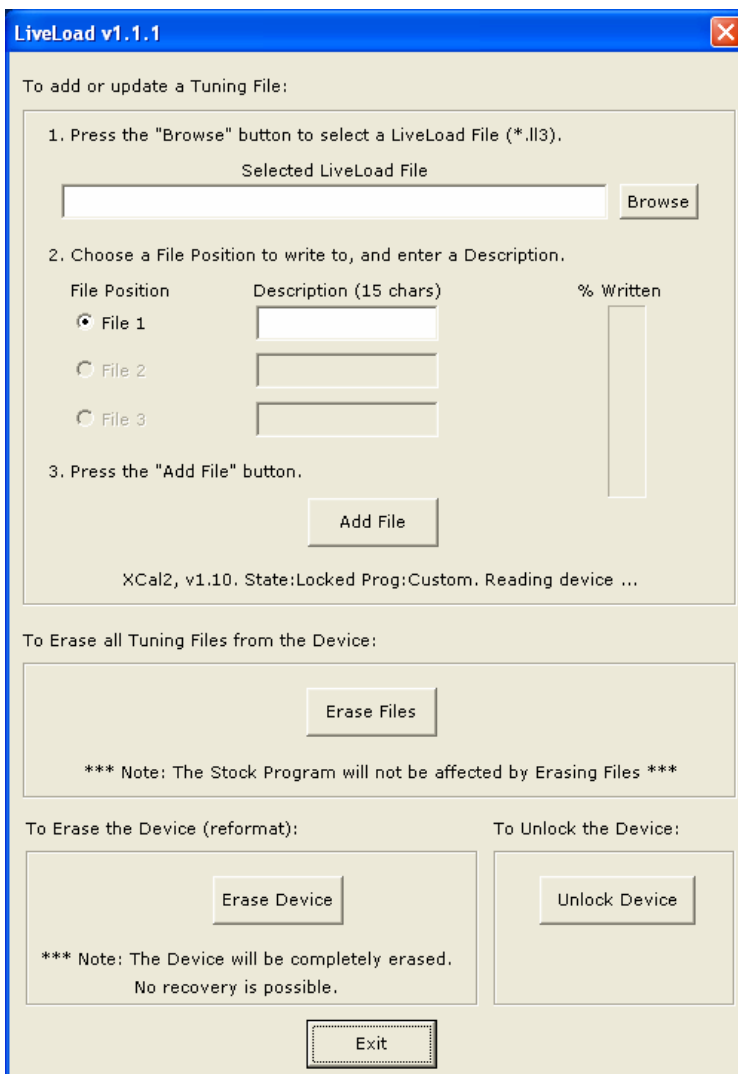


Using Live Load

First open the LiveLoad.exe program.



You will get this message, press OK after verifying the Xcalibrator 2 is on the main menu and connected to your USB port.



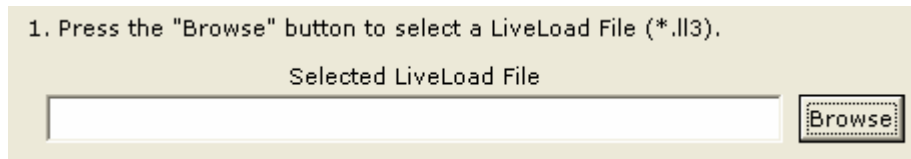
There are 4 Functions that this program performs.

The first, and major design of the program is to program the Xcalibrator 2 with user adjustability files created by a SCT dealer.

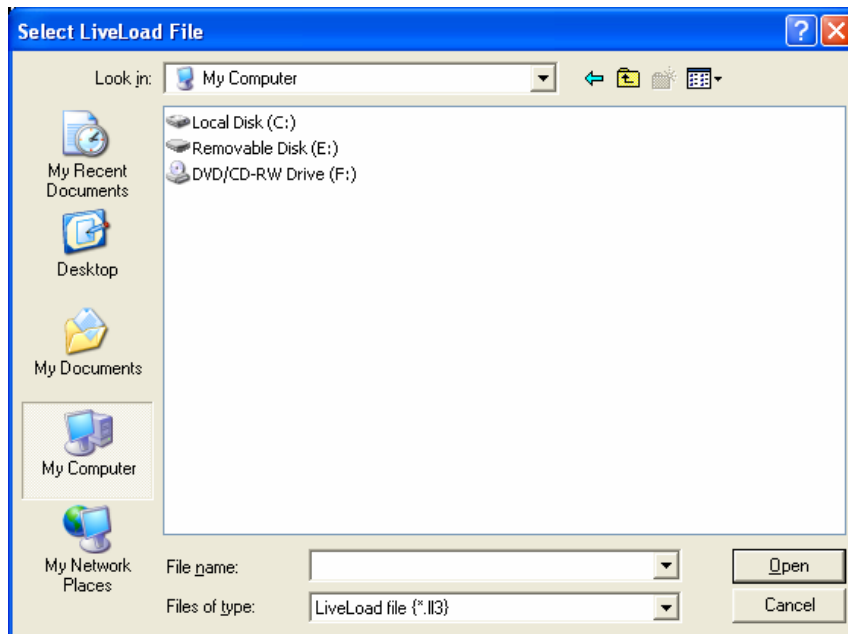
You need to get the files from your dealer in a LF3 File format for use with this program.

The dealer has the option of programming a certain serial number into the Xcalibrator 2 and only allowing the files sent to work on your device. The serial number protection only works with the Xcalibrator 2s that have a barcode serial number

To select the file you wish to load onto your Xcalibrator 2, press the "Browse" Button.



Now you will see a similar screen, navigate your computer and select your tune file you wish to load.



After choosing a file, under the Description field type in the name you wish to call the file. In this example, the file is called "AMZ2 FILE 1"

2. Choose a File Position to write to, and enter a Description.

File Position	Description (15 chars)	% Written
<input checked="" type="radio"/> File 1	AMZ2 FILE 1	
<input type="radio"/> File 2		
<input type="radio"/> File 3		

3. Press the "Add File" button.

Add File

After entering the file name, press the add file button.

Add File

2. Choose a File Position to write to, and enter a Description.

File Position	Description (15 chars)	% Written
<input checked="" type="radio"/> File 1	AMZ2 FILE 1	
<input type="radio"/> File 2		
<input type="radio"/> File 3		

3. Press the "Add File" button.

17:55:25

Add File

17:55:35

Writing Tuning File ...

The program will go through and write the files to the device, the status bar on the right side will display your progress. Once finished you will get a message "Programming was successful!!!"

17:55:25

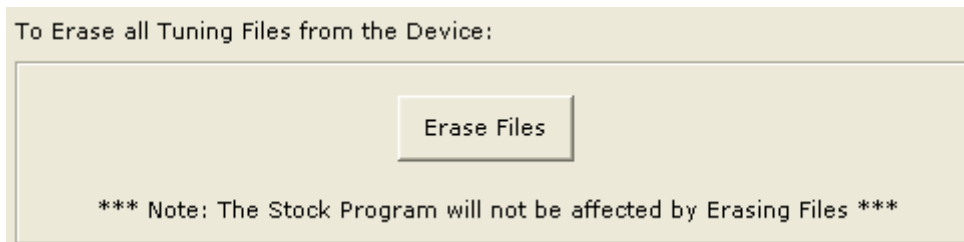
Add File

17:56:06

Programming was successful!!!

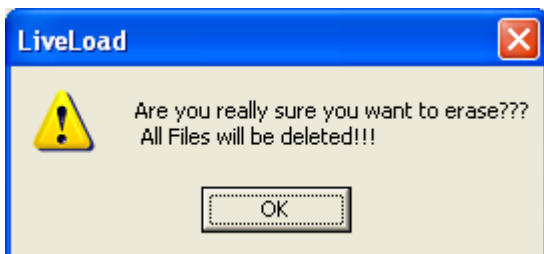
At this point you can go program your vehicle and enjoy the new tunes and user options.

Erase Files



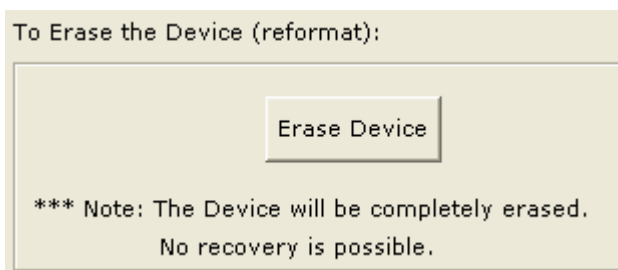
This program is used to erase the files off of your Xcalibrator 2, this does not delete your stock file, but is used when you want to erase the tune files off of your Xcalibrator 2.

When you press the Erase Files button, you will get this error message.



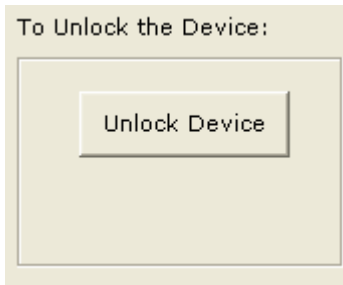
After pressing OK the tune files are erased off the unit.

Erase Device



This function is designed if you wish to turn a 9415 series tuner into a custom tuned 9400 tuner. This is a 1 WAY CHANGE and cannot be reversed.

Erase Device



This function is **ONLY** used when you want to unlock an Xcalibrator 2 to use on **ANOTHER** vehicle, after flashing the first vehicle back to stock. You **DO NOT** want to unlock the device for any other reason, as it will use one of your vehicle changes during each unlock.